



TOWN STREET COURT

A new development of 35 spacious modern two bed apartments



A stylish new development of 35 luxury apartments, combining contemporary architecture with spacious modern interiors. Elevated above Leeds city centre, the scheme benefits from panoramic views of the city and beyond. The development has been designed around a central courtyard, all access being via electronically operated gates, creating a beautifully landscaped gated community.

Location

Situated to the south of Leeds city centre just minutes from the ring road, providing easy access to the M1 and M62 motorway network. The scheme benefits from being in the town centre close to all the local amenities, excellent transport links are available to Leeds city centre, the White Rose shopping centre and surrounding areas.



www.bpiassociates.com

0844 8005743

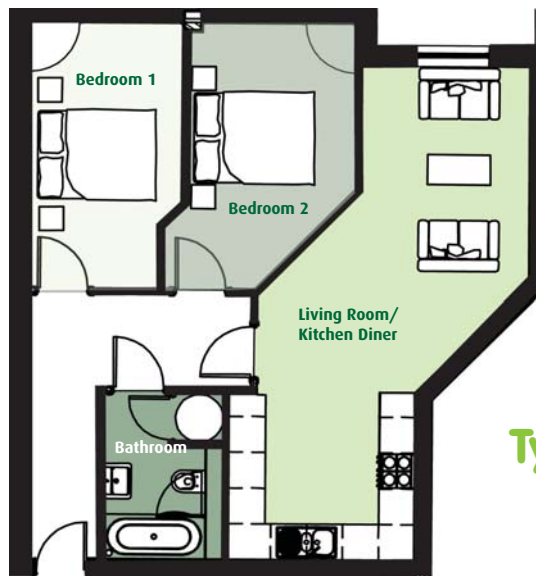
Key Features

- Modern high quality fitted kitchens, incorporating full size fridge freezers, washer dryer, integrated dishwasher, stainless steel oven with ceramic hob.
- Spacious bathrooms featuring contemporary white suites with power shower and high quality ceramic wall tiling.
- Totally private gated community with electronically operated gates for vehicle and pedestrian access.
- Door entry system.
- Dedicated car parking spaces within the landscaped courtyard.
- High thermally efficient construction reducing the buildings carbon emissions, reducing energy costs.



Apartments are available on a first come first serve basis, to discuss the development in more detail, please feel free to contact our sales office on 0844 800 5743.

Should you require a mortgage our mortgage adviser is always available to assist you.



Typical Layout

The Apartments

No.	Location	m2	ft 2	Price £
1.	Ground Floor	59	638	129,995
2.	Ground Floor	59	635	129,495
3.	Ground Floor	59	634	128,995
4.	Ground Floor	60	650	129,995
5.	Ground Floor	68	738	149,995
RESERVED	Ground Floor	71	763	149,995
7.	Ground Floor	70	750	149,995
8.	Ground Floor	62	670	135,995
9.	Ground Floor	68	736	149,995
SOLD	Ground Floor	59	637	129,495
SOLD	Ground Floor	59	632	124,995
12.	First Floor	59	638	130,995
13.	First Floor	59	635	129,995
14.	First Floor	58	634	129,995
15.	First Floor	60	650	132,995
16.	First Floor	67	717	146,995
17.	First Floor	64	704	143,995
RESERVED	First Floor	71	763	149,995
19.	First Floor	73	788	149,995
20.	First Floor	63	678	138,995
21.	First Floor	68	736	149,995
SOLD	First Floor	59	637	129,995
SOLD	First Floor	59	632	129,995
24.	Second Floor	59	638	133,995
25.	Second Floor	59	635	133,495
26.	Second Floor	59	634	132,995
27.	Second Floor	60	650	136,495
28.	Second Floor	67	717	149,995
29.	Second Floor	64	704	147,995
30.	Second Floor	71	763	149,995
31.	Second Floor	73	788	149,995
32.	Second Floor	63	678	142,495
33.	Second Floor	68	736	149,995
34.	Second Floor	59	637	133,995
SOLD	Second Floor	59	632	132,995

modern living, affordable quality



for further information, please contact

0844 800 5743

